



P-STAR 2025

PinnacleSTARReward Exam

For 5th to 12th Class Students

STAGE - 1 & STAGE - 2

Pinnacle STAR Reward Exam

**SAMPLE TEST
PAPER**

Class 7th

5th to 12th Class Students GET READY FOR

THE MOST AWAITED & BIGGEST
TALENT QUEST EXAM
OF THE YEAR BY **PINNACLE** IS HERE!



P-STAR -2025

Pinnacle STAR Reward Exam

STAGE - 1 & STAGE - 2



Test Date

Stage-1

7th November, 2025

Stage-2

14th November, 2025

Registration Details

Register Online
at our Website

OR

Scan
QR



Free Registration

Address

Pinnacle Techno School
Bhirigu Ashram Rd,
near syndicate Bank
Ballia, Uttar Pradesh

Call Now

705488662020
880085585664

What Makes Pinnacle Unique?

1 Best Faculty Team

2 Hi-Tech Classrooms

3 Customized Study material

4 Personal Attention

5 Unlimited Doubt Sessions

6 Best Testing Methodology



Lecture
Recording
Lab



Revision
Classes &
Self Study
Zones



Online Testing
Lab (CBT)



Smart & AC
Classrooms



Objective +
Subjective



Student
Performance
and
Analysis Report



Rich Library &
Researched
Study
Modules



Extra Support
to weaker
students



CCTV
Campus



Biometric
Attendance

Classroom Program

1 Comprehensive Classroom Lectures

All classes at Pinnacle are conducted by highly qualified and experienced faculty members, mostly IITians. Each chapter is started at the grass root level and is dealt to an extent which is the requirement of competitive examinations, with an aim of enabling the students to develop a comprehensive view of the whole chapter with a thorough understanding.



Doubt Clearance 2

"If you ask a question, you may appear fool for some time, but if you don't, you'll remain a fool for whole life." System at Pinnacle encourages all students to ask their doubts and questions.

3 Regular Tests Online and Offline

As JEE Mains and Advanced have gone completely online and NEET is in the pipeline, we have launched a dedicated online testing platform where students can practise over CBT (Computer Based Tests). The combination of online and offline testing modes based on latest JEE/NEET patterns ensure that students are at par with the recent changes. Students can check their test reports and performance analysis via a unique online login ID. Their results are also communicated to parents via SMS.



Addressing the Board Exam 4

Pinnacle has a very distinct methodology for preparing the students for competitive examinations while in full synchronization with Board Exams as well. Board level tests are conducted alongside the regular JEE/NEET tests and the copies are graded at very meticulous level by teachers. Students receive methodological tips so as to perform excellent in the board Exams as well.



Engineering
JEE Main & Adv.



Medical
NEET



Foundation
VI, VII, VIII, IX, X, NTSE Olympiad

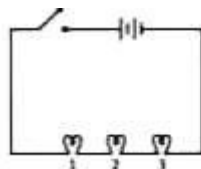


Subjective
Boards

Section – A Science

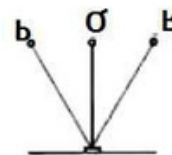
This section contains **30 Multiple Choice Questions**. Each question has four options out of which **ONLY ONE** is correct.

1. Phenomenon of advance sunrise and delayed sunset is caused by:
 - (a) Reflection of light
 - (b) Refraction of light
 - (c) Dispersion of light
 - (d) All the above
2. Marking on a bulb is 15 W, 120 V. What does it signify?
 - (a) The bulb is connected across the 120 volts, 15 joules of energy is consumed for every second
 - (b) The bulb is connected across 15 volts, 120 joules of energy is released.
 - (c) 40 units of current will flow in the bulb
 - (d) 220 unit of current will flow in the bulb
3. A child pushes a car but it does not displace from its place then, the work done by child will be known as:
 - (a) positive work
 - (b) negative work
 - (c) zero work
 - (d) none of these
4. Which of the following statements will be true for the given circuit, when the switch will be on?



- (a) Lamp 3 will glow first
 - (b) Lamp 1 will glow first
 - (c) Lamp 1 and 2 will glow together and lamp 3 will glow later
 - (d) All the lamps will glow together
5. Bodies at different temperatures are placed in thermal contact with each other, heat flows from the body at higher temperature to the body at lower temperature until they both acquire the same temperature. Assuming that there is no loss of heat to the surroundings, the heat:
 - (a) The heat gained by the hotter body will be equal to the heat lost by the colder body
 - (b) the heat gained by the hotter body will be less than the heat lost by the colder body

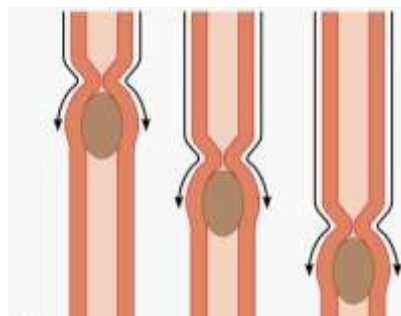
- (c) the heat gained by the hotter body will be greater than the heat lost by the colder body
 - (d) the heat lost by the hotter body will be equal to the heat gained by the colder body.
6. We receive heat energy from the sun through _____ mode of transmission
 - (a) Conduction
 - (b) Convection
 - (c) Radiation
 - (d) Yet to be found
7. Richa takes 20 minutes from her house to reach her school. If her speed is 4 m/s, calculate the distance between her house and the school.
 - (a) 4800 m
 - (b) 2400 m
 - (c) 1600 m
 - (d) 1500 m
8. The time period in the given simple pendulum is:



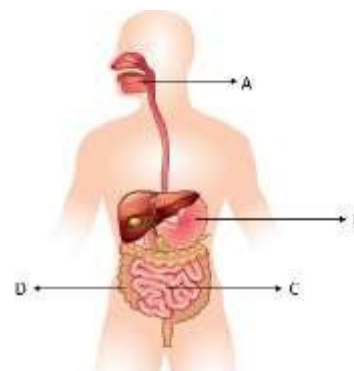
- (a) Time taken by bob to travel Q to R
 - (b) Time taken by bob to travel Q to P then from P to Q.
 - (c) Time taken by bob to travel Q to R then from R to P
 - (d) Time taken by bob to travel Q to R then from R to P and then from P to Q
9. Which of the following is an advantage of distance-measuring?
 - (a) Variation of distance travelled by an object with mass can be seen easily
 - (b) We can find distance moved by the object at any point of time
 - (c) We can find speed of an object
 - (d) All of these
10. Short wire has _____ whereas long wire has _____ resistance.
 - (a) More, less
 - (b) Less, no
 - (c) Less, more

- (d) All the above
11. When phenolphthalein is introduced in lime water, the solution turns:
 (a) Yellow
 (b) Green
 (c) Colourless
 (d) Pink
12. The chemical used in the manufacture of antacid is –
 (a) phosphoric acid
 (b) magnesium hydroxide
 (c) caustic soda
 (d) Both b and c
13. Conversion of ozone into oxygen is
 (a) physical change
 (b) chemical change
 (c) periodic change
 (d) temporary change
14. When sodium oxide reacts with water it undergoes a chemical change. The name of the product is –
 (a) Hydrogen
 (b) Sodium chloride
 (c) Sodium hydroxide
 (d) Sodium nitride
15. A fibre which is lustrous in appearance is –
 (a) Jute
 (b) Cotton
 (c) Rayon
 (d) wool
16. The "World Water Day" is celebrated on –
 (a) 12 January
 (b) 22 March
 (c) 16 June
 (d) 14 July
17. The fibres of silk are made up of –
 (a) Fat
 (b) Protein
 (c) Carbohydrate
 (d) vitamin
18. The substance having highest specific heat is –
 (a) Kerosene
 (b) Petrol
 (c) Alcohol
 (d) water
19. The rate of evaporation increases with the
 (a) increase in temperature.
 (b) decrease in surface area.
 (c) increase in humidity.
 (d) decrease in wind speed.
20. Renu had a basic solution. She added an indicator and the solution turned green. The indicator is –
 (a) Phenolphthalein
 (b) Methyl orange
 (c) Litmus red

- (d) China rose
21. Which of the following sets is the correct combination of organs that carry out digestive functions?
 (a) Oesophagus, Large intestine, Rectum
 (b) Buccal cavity, Oesophagus, Rectum
 (c) Buccal cavity, Small intestine, Large intestine
 (d) Stomach, Buccal cavity, Small intestine
22. The movement shown in figure is aided by the muscles of the oesophagus in a wave-like action called

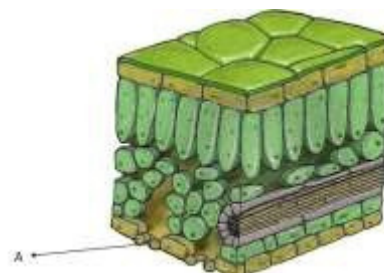


- (a) Diapedesis
 (b) Peristalsis
 (c) Rumination
 (d) Muscularization
23. Which part secretes gastric juice?



- (a) A (b) B (c) C (d) D
 Identify A in given figure

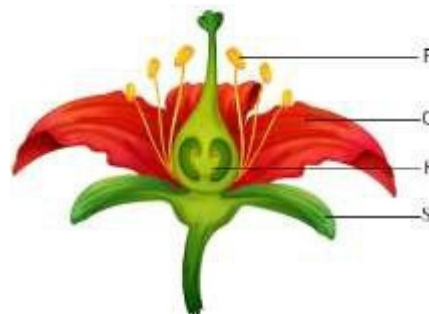
24.



- (a) Leaf cell
 (b) Flower anatomy
 (c) Stomata

- (d) Can't determine
25. How many statements are correct? Statement 1: Fungi grow on pickles, leather, clothes and other articles that are left in hot and humid weather for long time
Statement 2: Digestion is the process of utilizing the absorbed nutrients to produce energy for various body functions
Statement 3: The jug-like structure in pitcher plant is the modified part of stem
Statement 4: Algae can prepare their own food by photosynthesis
- (a) One
(b) Two
(c) Three
(d) Four
26. Consider the following statements and select the option in which correctly identifies true (T) and false (F) ones.
- Statement 1: Insects have a network of air tubes called tracheae for gas exchange
Statement 2: During heavy exercise, we get cramps in the legs due to accumulation of carbon dioxide
Statement 3: Earthworms breathe only through lungs
Statement 4: During inhalation, ribs move down and inwards and diaphragm moves up
- (a) (1) → F, (2) → T, (3) → F, (4) → T
(b) (1) → T, (2) → T, (3) → F, (4) → T
(c) (1) → T, (2) → F, (3) → F, (4) → F
(d) (1) → T, (2) → T, (3) → T, (4) → F
27. Read the given passage. Pulmonary carries rich blood from the heart to the lungs and pulmonary___ carries___rich blood from the lungs to the heart. Select the option that correctly fills up the blank spaces in the above passage.
- (a) Vein, Carbon dioxide, Artery, Oxygen
(b) Vein, Oxygen, Artery, Carbon dioxide

- (c) Artery, carbon dioxide, Vein, Oxygen
(d) Artery, Oxygen, Vein, Carbon dioxide
28. Which part will protect the flower in bud condition?



- (a) P
(b) Q
(c) R
(d) S
29. How many statements are incorrect?
- Statement 1: The process of removal of metabolic wastes produced in the cells of the living organisms is called excretion
Statement 2: The urine consists of 70 % water, 25 % urea and 2.5% other waste products.
Statement 3: From ureter, urine will directly go outside the body
- (a) One
(b) Two
(c) Three
(d) All are correct
30. Consider the following statements
- Statement 1 – The heart beat is initiated by special patch of muscle called SA node
Statement 2 – The walls of the chambers of the heart contract and relax rhythmically
- (a) Both statements 1 and 2 are true and statement 2 is the correct explanation of statement 1.
(b) Both statements 1 and 2 are true but both are different statements
(c) Statement 1 is true but statement 2 is false
(d) Both statements 1 and 2 are false

Section – B Mathematics

This section contains **20 Multiple Choice Questions**. Each question has four options out of which **ONLY ONE** is correct.

31. The value of $(3) + (4 \times 5) - (10)$ is

- (a) -5
- (b) 5
- (c) 17
- (d) 10

32. Find the value of $|3 - 7|$?

- (a) 4
- (b) 10
- (c) -4
- (d) -10

33. In a class of 50 students, 20% of them are girls and rest are boys. Find the ratio of number of boys to the number of girls in the class.

- (a) $3 : 1$
- (b) $4 : 1$
- (c) $3 : 2$
- (d) $2 : 3$

34. 0 is an integer which is:

- (a) Positive
- (b) Negative
- (c) Either positive or negative
- (d) Neither positive nor negative

35. If one-fifth of two-third of one-half of number is 30, then find the number.

- (a) 450
- (b) 900
- (c) 950
- (d) 400

36. The highest score in a cricket test match in an

innings was $\frac{3}{11}$ of the total and the next highest

was $\frac{3}{10}$ of the remaining. If the difference

between two scores was 24 runs, then the total score is equal to:

- (a) 420
- (b) 430
- (c) 410
- (d) 440

37. $\frac{0.55^2}{0.055^2} \times \frac{0.07^2}{0.007^2} \times \frac{0.027^2}{0.0027^2} = ?$

- (a) 100
- (b) 10

(c) 1000

(d) 1

38. If $2 \times \frac{1}{1 + \frac{1}{3 + \frac{1}{4}}}$, then the value of x is

(a) $\frac{12}{17}$

(b) $\frac{21}{17}$

(c) $\frac{18}{17}$

(d) $\frac{13}{17}$

39. $\frac{63 \times 36 \times 2}{63^2 \times 36^2} = ?$

(a) 1

(b) 2

(c) 3

(d) 4

40. If $\frac{a}{3} \times \frac{b}{4} \times \frac{c}{7}$, then the value of $\frac{a \times b \times c}{c}$ is

(a) 3

(b) $\sqrt{2}$

(c) 2

(d) 7

41. The median of the following data is equal to:

$-2, 3, 4, 5, 9, 8, 11$

(a) 5

(b) 4

(c) 9

(d) None of these

42. If mode and median of a given data are 6 and 3 respectively, then their mean is

(a) 1.5

(b) 1.6

(c) 1.4

(d) None of these

43. The denominator of a fraction is 2 more than its numerator. If 2 is added to both numerator and denominator, then we get $\frac{3}{5}$. The required fraction is

- (a) $\frac{1}{3}$
- (b) $\frac{3}{5}$
- (c) $\frac{7}{9}$
- (d) $\frac{9}{11}$

44. The complement and supplement of an angle are such that the complement is $\frac{5}{14}$ times its supplement. The angle is

- (a) 40°
- (b) 60°
- (c) 70°
- (d) None of these

45. The angle formed by the bisectors of a linear pair of angles is

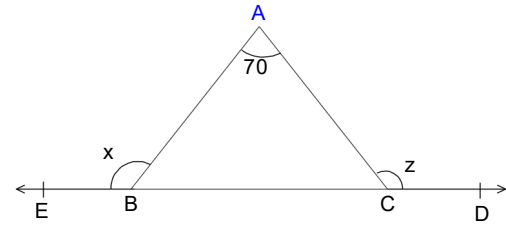
- (a) Right – angle
- (b) Acute angle
- (c) Obtuse angle
- (d) Reflex angle

46. The altitudes of a triangle are concurrent. The point of concurrence is known as

- (a) Orthocenter
- (b) Circumcenter
- (c) Centroid

(d) Incentre

47. In the given figure, find the measure of $(x + z)$



- (a) 225°
- (b) 250°
- (c) 300°
- (d) None of these

48. A rectangle of length 40 cm and of diagonal 41 cm is constructed. Find the area of the square described on its breadth

- (a) 100
- (b) 41
- (c) 81
- (d) 121

49. Two numbers are in the ratio 5:3. If they Differ by 18, then the number are

- (a) 45, 27
- (b) 25, 15
- (c) 35, 21
- (d) 65, 39

50. Which of the following is not correct

- (a) two lines segments of length 4 cm are always congruent
- (b) a person and his image in plane mirror are congruent
- (c) two equilateral triangle are always congruent
- (d) two circles of the same radii are always congruent

Section - C Mental Ability

This section contains **10 Multiple Choice Questions**. Each question has four options out of which **ONLY ONE** is correct.

51. Complete the series

3,6,18,72,360,.....

- (a) 1296
- (b) 2160
- (c) 2254
- (d) 4329

52. Arrange the given words in Alphabetical order and choose the one that comes in the 2nd position.

- (a) Restrict
- (b) Rocket
- (c) Robber
- (d) Random

53. In a certain code 678 means 'Study very hard', 347 , means 'hard work pays' and 246 means 'study and work'. Which of the following is the code for 'very'?

- (a) 4
- (b) 6
- (c) 7
- (d) 8

54. If the day before yesterday was Thursday, when will be Sunday?

- (a) Today
- (b) Two days after today
- (c) Tomorrow
- (d) Day after tomorrow

55. If A stands for +, B stands for -, C stands for \times , then what is the value of $(10 \text{ C } 4) + (4 \text{ C } 4) \text{ B } 6 = ?$

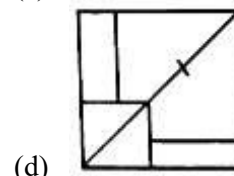
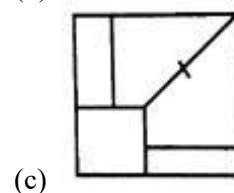
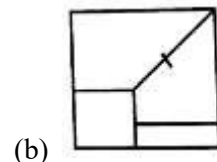
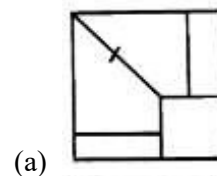
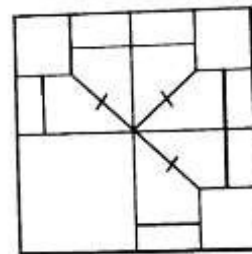
- (a) 60
- (b) 56
- (c) 50
- (d) 20

56. Sobha was facing East, She walked 20 metres.

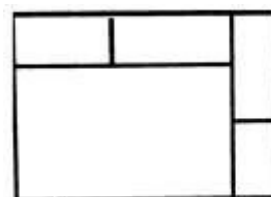
Turning left she moved 15 metres and then turning right moved 25 metres. Finally, she turned right and moved 15 metres more. How far is she from her starting point?

- (a) 25 metres
- (b) 35 metres
- (c) 50 metres
- (d) 45 metres

57. Which answer figure will complete the pattern in the question figure?



58. What is the number of rectangles in the following figure?



- (a) 5
- (b) 7
- (c) 8
- (d) 9

59. How many meaningful words can be formed with the letters EAML?

- (a) 1
- (b) 3
- (c) 4
- (d) 2

60. In a month of 31 days, the third Wednesday falls on the 15th. What will be the last day of that month?
- (a) Fifth Thursday

- (b) Fifth Wednesday
(c) Fourth Sunday
(d) Fifth Friday

SPACE FOR ROUGH WORK

Answer Key

1	b	21	d	41	b
2	a	22	b	42	a
2	a	23	b	43	a
4	d	24	c	44	a
5	d	25	b	45	a
6	c	26	c	46	a
7	a	27	c	47	b
8	d	28	d	48	c
9	d	29	a	49	a
10	c	30	b	50	c
11	d	31	a	51	b
12	b	32	b	52	a
13	b	33	b	53	d
14	c	34	d	54	c
15	c	35	a	55	c
16	b	36	d	56	d
17	b	37	a	57	c
18	d	38	b	58	d
19	a	39	b	59	b
20	d	40	c	60	d